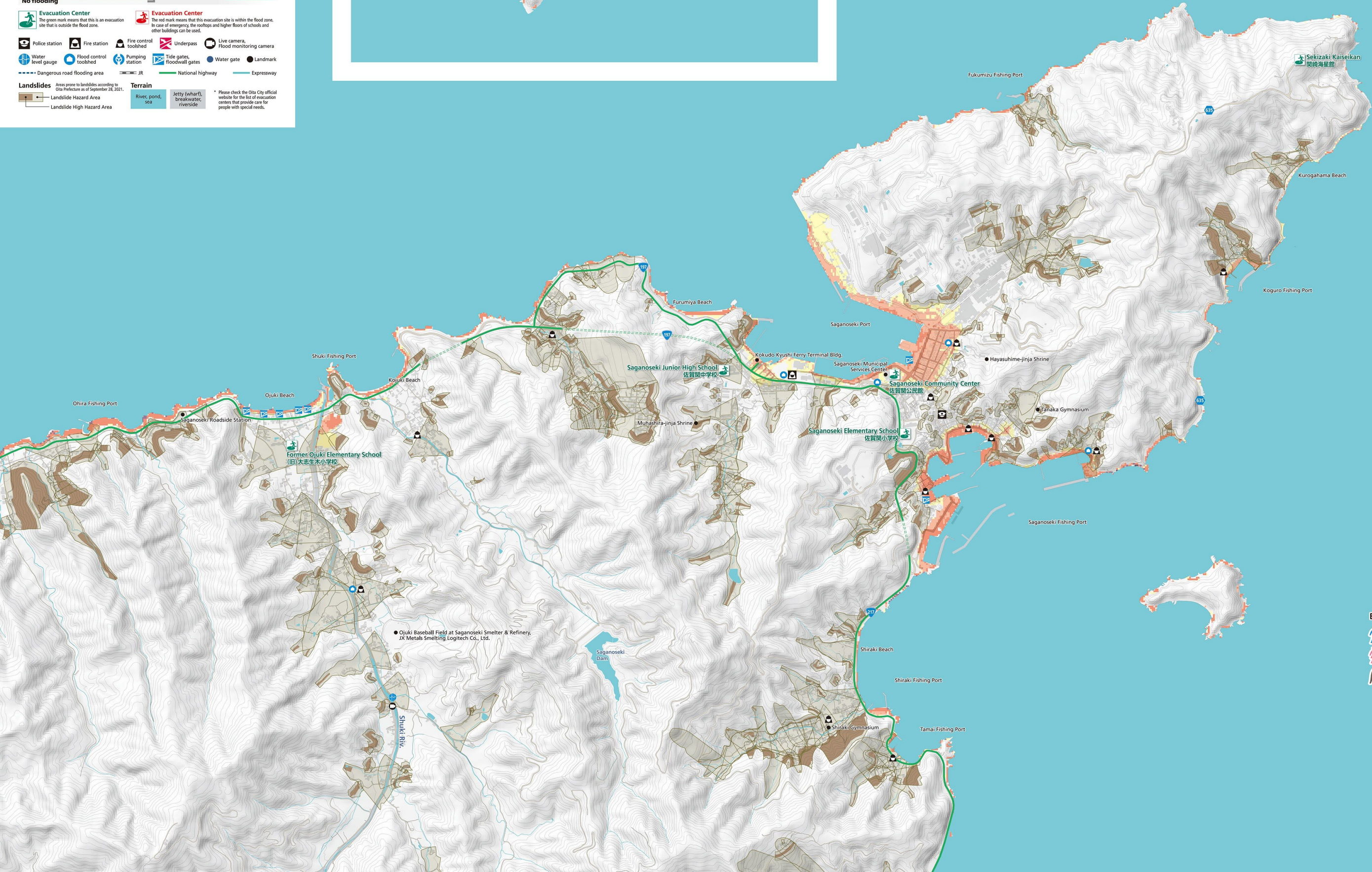
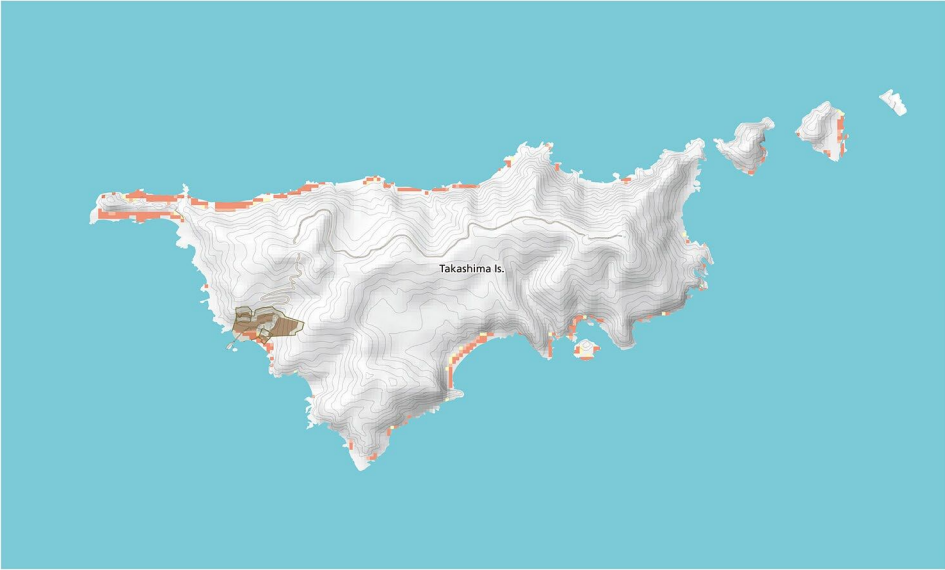
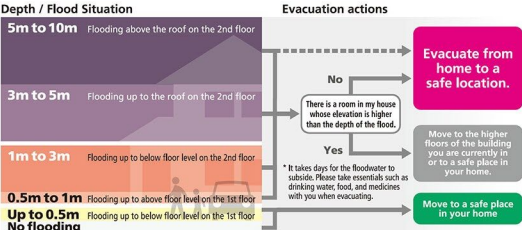


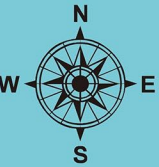
Oita City Storm Surge Hazard Map

6 Saganoseki / Takashima Island

Predicted storm surge inundation areas
Largest expected scale
[Simulated typhoon] The strongest and largest typhoons in history that hit Japan were Typhoon Muroto with a central pressure of 900 hPa in 1934, and Typhoon Iwan with a velocity of 73 km/h in 1958.
This map shows what would happen if a typhoon around the same size and intensity were to produce a storm surge in Oita City.



Estimated Time to Walk 500m (flat road)



1:11,000

